



Calving induction



## Labipituin<sup>®</sup>

Oxytocin in injectable solution



### Hormone of choice in obstetrics

- ✓ Calving induction
- ✓ In case of uterine inertia or atony
- ✓ Aids in the placenta expulsion
- ✓ Causes expulsion of exudates in cases of pyometritis and endometritis

### Action on lactation

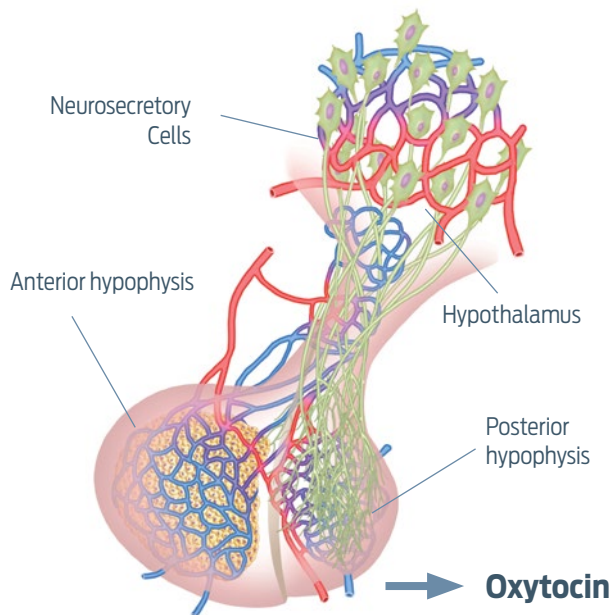
- ✓ Starting lactation after calving
- ✓ Indicated as adjuvant in treatments of mastitis to facilitate drainage

**LABIANA**  
*always works*

# **Labipituin<sup>®</sup>** Oxytocin in injectable solution



**Oxytocin selectively stimulates the motor activity of the uterus and of the mammary myoepithelial cells**



## COMPOSITION PER ML

Oxytocin ..... 10 IU

## INDICATIONS

### Cows:

- Calving induction.
- Uterine inertia or atony.
- Involution of the uterus after caesareans and reduction of hemorrhaging.
- Expulsion of afterbirth and remains of exudates after calving.
- Starting lactation after calving.
- Chronic pyometritis and endometritis to cause expulsion of exudates.
- Adjuvant treatment for antibiotic therapy of acute and chronic mastitis to cause the expulsion of remains and facilitate drainage.

## DOSAGE AND ROUTE OF ADMINISTRATION

**Obstetrics** (intravenous, intramuscular, subcutaneous routes):

- **Cows:** 75-100 IU (equivalent to 7.5-10 ml).

**Milk ejection** (preferably intravenous route):

- **Cows:** 10-20 IU (equivalent to 1-2 ml).

Administration can be repeated every 30 minutes, if the veterinary deems it necessary.

## WITHDRAWAL PERIOD

**Meat:** zero days.

**Milk:** zero days.

## CONTRAINDICATIONS

Do not use in the following cases:

- Hypersensitivity to the active substance or to any excipient.
- Dystocia due to abnormal presentation, pelvic-fetal disproportion or any type of mechanical obstruction.
- Cardiovascular diseases.
- Females with predisposition to uterine rupture.
- When there is no dilation of the uterine neck (in calving induction).

## SPECIAL PRECAUTIONS FOR USE

Intravenous injection must be very slow, and preferably with glucose or saline solution.

Administer with caution in toxemias. Possible allergic reactions.

Do not use in pregnant females until time of calving.

Corticosteroids, sympathomimetic vasoconstrictors and anaesthetics can intensify its effects, as well as calcium, estrogens and prostaglandins.

## SPECIAL PRECAUTIONS FOR STORAGE

Store in refrigerator (between 2 °C and 8 °C). Protect from light.

## PRESENTATIONS

25, 100 and 250 ml vials.

Registry no. 585 ESP

*Medication subject to veterinary prescription.*

*Administration under control or supervision of the veterinary.*

