

80 mg/ml

Concentration



Gentasol

Gentamicin in injectable solution



Treatment of infections in cattle

- ✓ Chronic and severe infections of the respiratory tract
- ✓ For cows with metritis and endometritis
- ✓ For digestive infections due to *E. coli* and *Salmonella*

Excellent absorption and fast- acting

- ✓ Reaches maximum concentration in 30-60 minutes

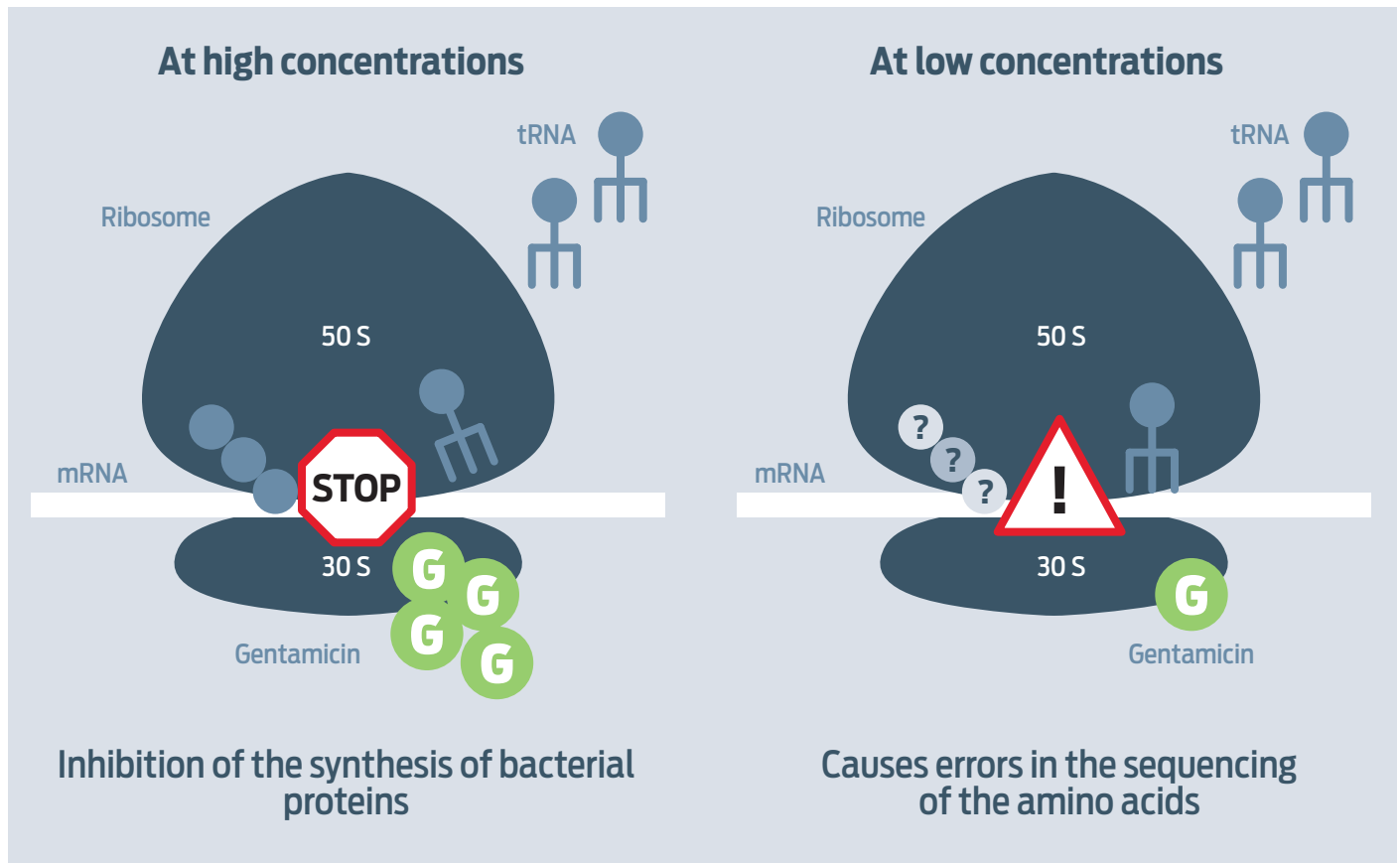
The best valued injectable gentamicin in the Spanish market

- ✓ Endorsed by our customers for its high quality

LABIANA
always works



Mechanism of action of gentamicin



COMPOSITION PER ML

Gentamicin (sulfate) 80,000 IU

INDICATIONS

Treatment of infections caused by microorganisms sensitive to gentamicin.

Calves (of up to 250 kg):

- Colibacillosis and salmonellosis.
- Genitourinary infections.
- Respiratory infections

DOSAGE AND ROUTE OF ADMINISTRATION

Cattle (calves of up to 250 kg): Intramuscular or slow intravenous route. Dose of 2000 - 5000 I.U. of gentamicin / kg b.w. every 8 - 12 hours (equivalent to 2.5 - 6.2 ml / 100 kg) for 3 days in a row.

Respect a maximum volume per injection point of 20 ml.

WITHDRAWAL PERIOD

Calves:

Meat: 214 days.

Milk: Do not administer to lactating females producing milk for human consumption.

CONTRAINDICATIONS

- Do not use in known cases of kidney dysfunction.
- Do not use in case of hypersensitivity to the active substance or to any excipient.
- Do not exceed the recommended dosage.
- Do not use during pregnancy.
- Do not use in dehydrated animals or with hearing alteration (loss of balance or inner ear damaged)
- Use of gentamicin on foals and neonates is not recommended.

PRESENTATIONS

100 and 250 ml vials.

Registry no. 638 ESP

Medication subject to veterinary prescription.

Administration under control or supervision of the veterinary.